

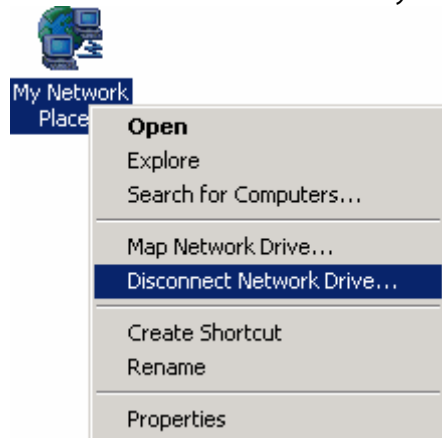
How to Upgrade Your Campus Computer to ParScore 5.5

Last updated: Monday, August 04, 2003

Step One: Disconnect Network Drive

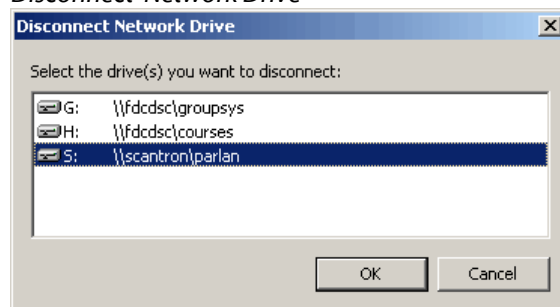
On your desktop, right-click on **My Network Places** and choose **Disconnect Network Drive...**

Figure 1
Disconnect Network Drive under My Network Places



Click on the **\\scantron\parlan** drive and then click on the **OK** button.

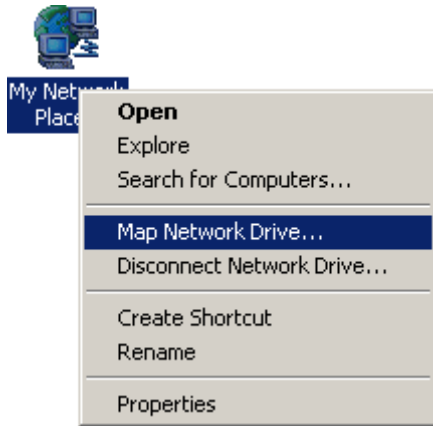
Figure 2
Disconnect Network Drive



Step Two: Map Network Drive

Right-click on **My Network Places** again and this time choose **Map Network Drive...**

Figure 3
Map Network Drive under My Network Places

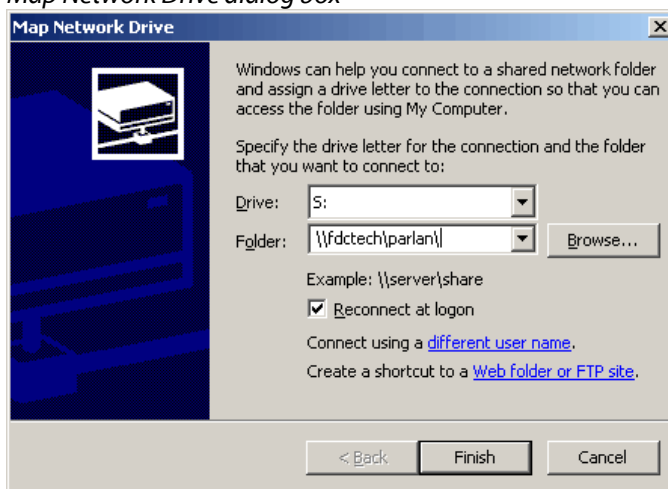


On the **Map Network Drive** screen, click on the **Drive:** pull down list and choose **S:**.
[**You MUST choose S:** if you want to use the Scantron server in the FDC or if you want to access Scantron on any other campus computer.]

In the Folder: box, key in `\\fdctech\parlan\`

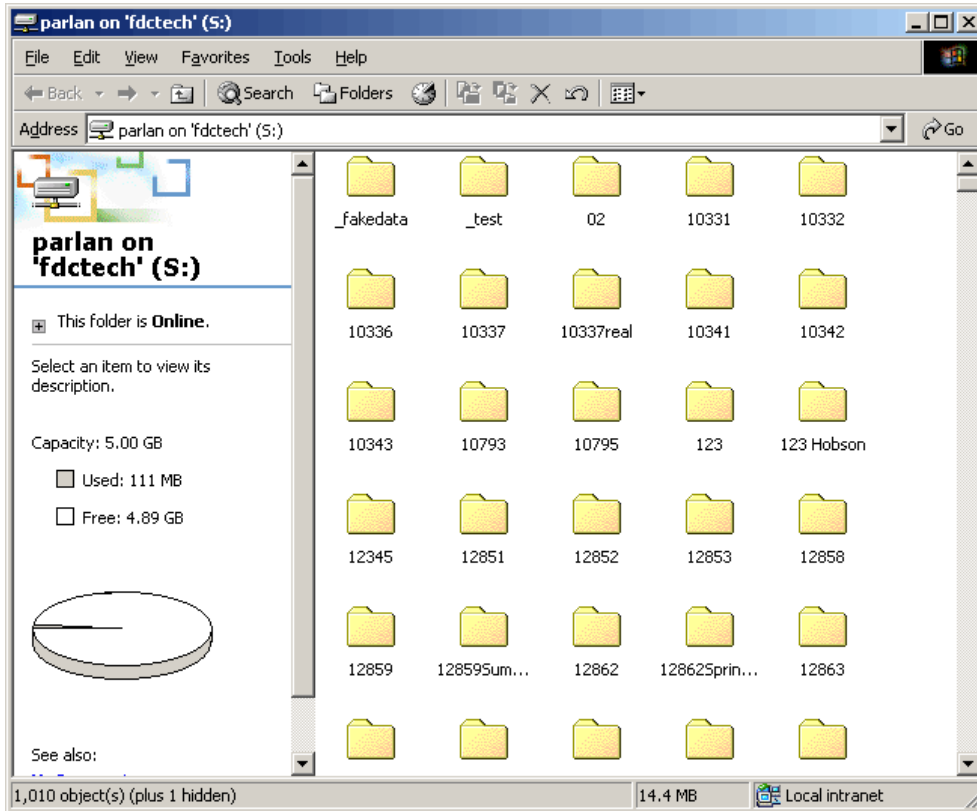
Check **Reconnect at logon** and then click on the **Finish** button.

Figure 4
Map Network Drive dialog box



Once you have clicked on the **Finish** button, the ParLAN window appears. Close this window.

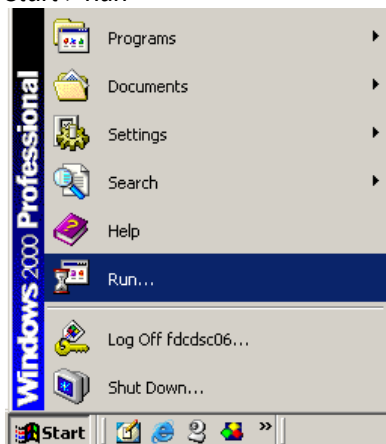
Figure 5
Parlan on 'fdctech'



Step Three: Reinstall the ParSCORE for Windows LAN Software

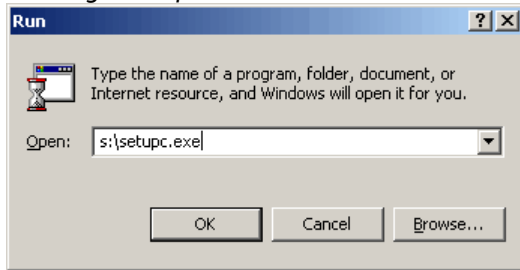
Go to **Start > Run**.

Figure 6
Start > Run



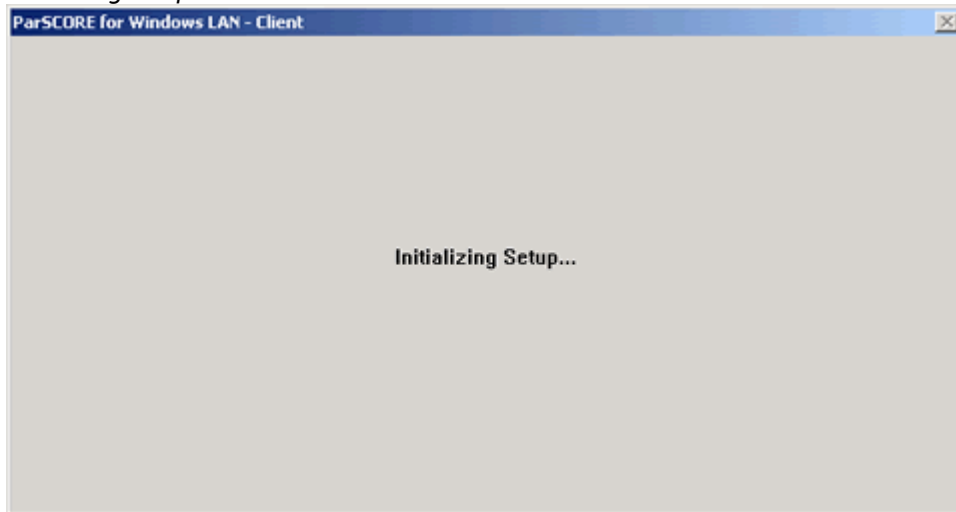
In the **Run** dialog box, key in **s:\setupc.exe** and click on the **OK** button. [Note the letter **c** in **setupc.exe**]

Figure 7
Running s:\setupc.exe



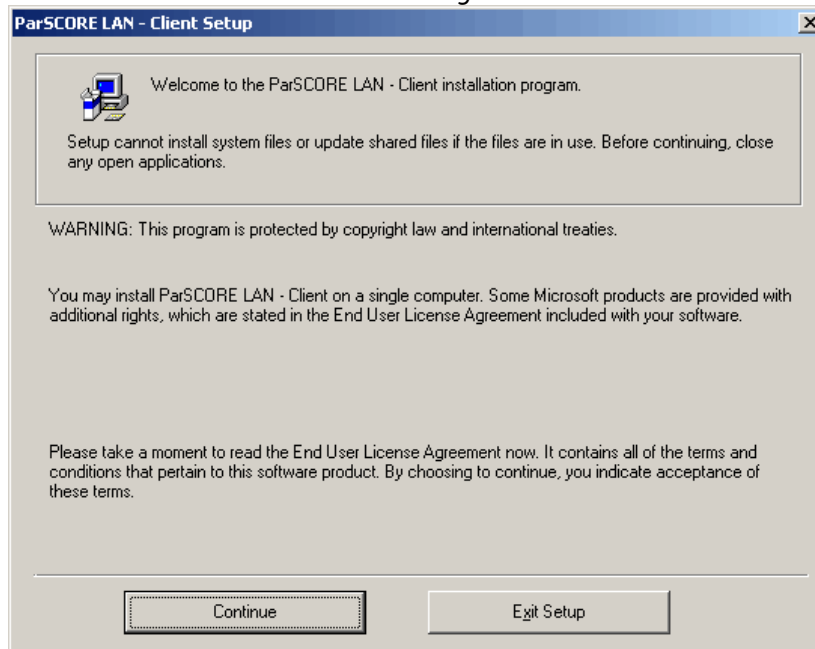
Once you run **setupc.exe**, an absurdly large **Initializing Setup** window appears for a few seconds.

Figure 8
Initializing Setup in ParSCORE for Windows LAN – Client



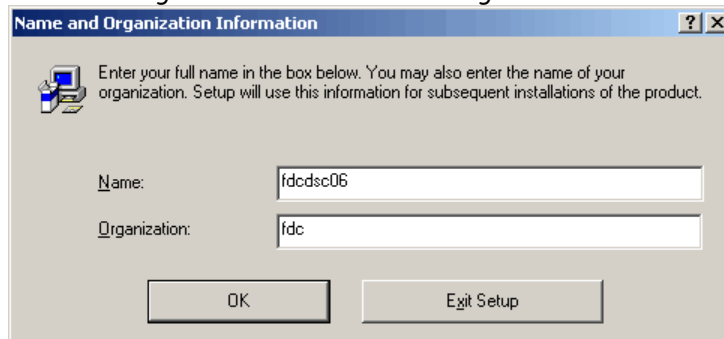
Shortly thereafter, a Welcome screen appears. Click on the **Continue** button.

Figure 9
Welcome to ParSCORE LAN – Client Dialog Box



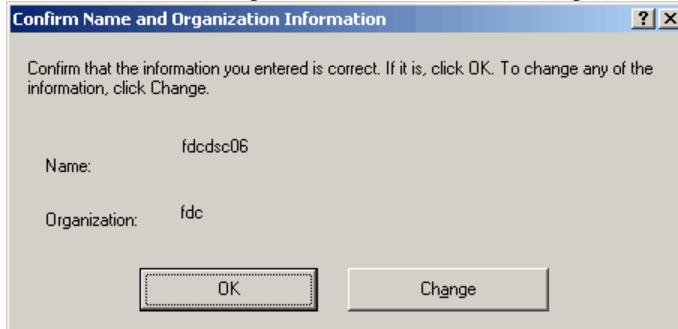
A box appears asking you for your name and organization information. Key in your name and department and then click on the **OK** button.

Figure 10
Name and Organization Information Dialog Box



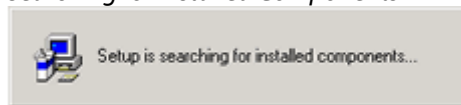
You'll be asked to confirm your name and organization. If the information is incorrect, click on the **Change** button. Otherwise, click on the **OK** button.

Figure 11
Confirm Name and Organization Information Dialog Box



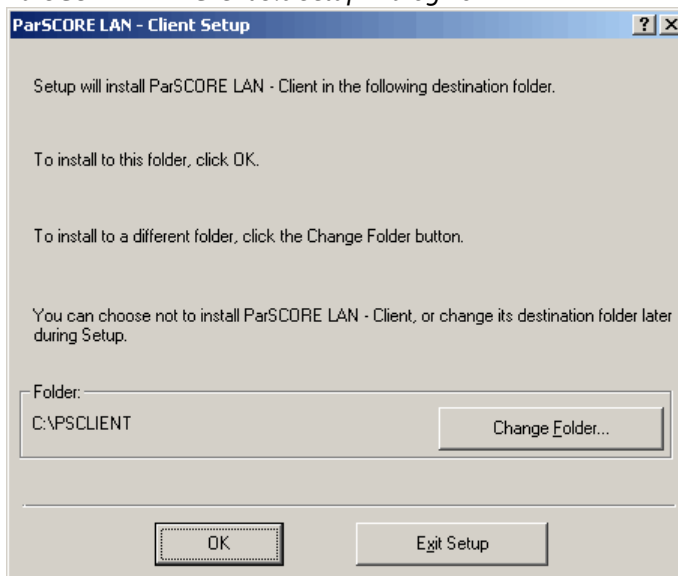
ParSCORE then searches your computer for previous installations of ParSCORE.

Figure 12
Searching for Installed Components



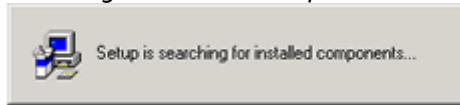
ParSCORE then gives you a choice of where on your computer you would like the software to be installed. Click on the **Change Folder...** button if you would like to change where the software is to be installed. Otherwise, click on the **OK** button.

Figure 13
ParSCORE LAN - Client 5.0 Setup Dialog Box



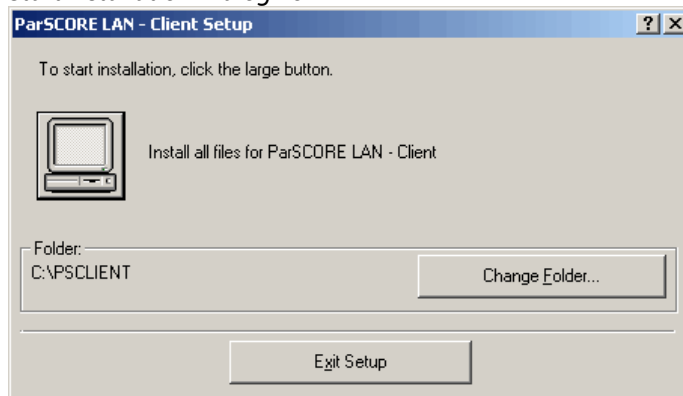
ParSCORE, once again, searches your system for previous installations of ParSCORE.

Figure 14
Searching for Installed Components



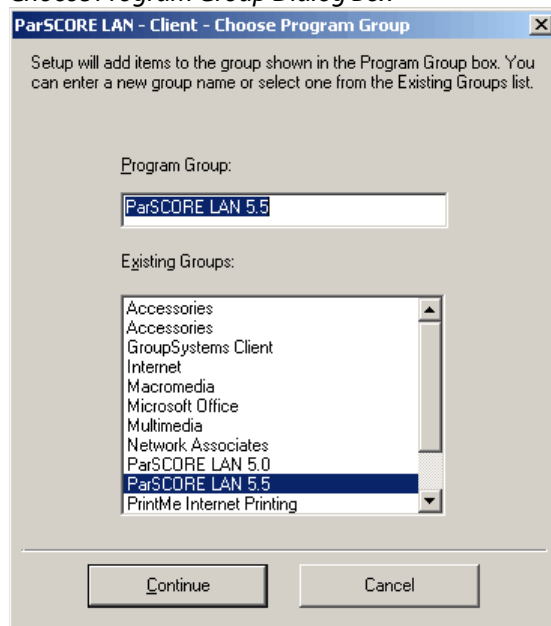
Eventually, the install window appears. Click on the large computer screen button (to the left of the words **Install all files for ParSCORE LAN – Client**)

Figure 15
Start Installation Dialog Box



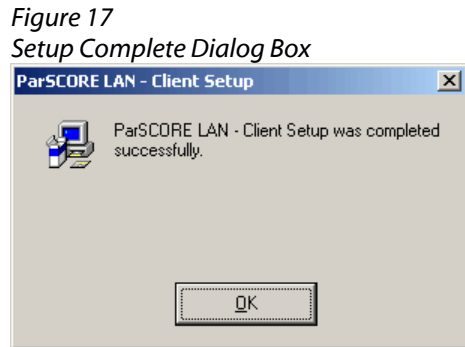
The next screen asks you to choose where on your Start menu you would like the ParSCORE icons to be installed. Choose a different location if you wish, or simply click on the **Continue** button.

Figure 16
Choose Program Group Dialog Box



The install process should go quickly. ParSCORE will check to see if your computer has the necessary free disk space to install the software, it will install the software, and it will then update your system.

Finally, when the installation process is complete, the following screen appears. Click on the **OK** button.



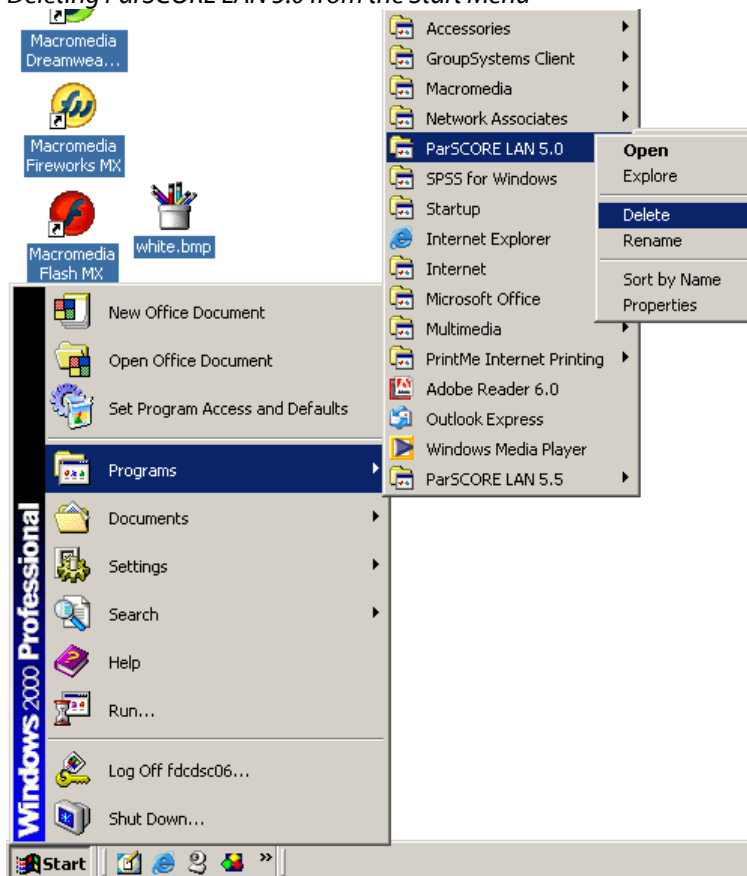
Step Four: Delete Your Old ParSCORE LAN 5.0 Start Menu Shortcut

There are now two shortcuts on your start menu to ParSCORE: an old shortcut to ParSCORE LAN 5.0 and a new shortcut to ParSCORE LAN 5.5. Both shortcuts work, and both will now open ParSCORE LAN 5.5.

To delete the old ParSCORE LAN 5.0 shortcut,

1. Hold your mouse over Start > Programs > ParSCORE LAN 5.0
2. Right-click.
3. Choose delete.

Figure 18
Deleting ParSCORE LAN 5.0 from the Start Menu



Step Five: Start ParSCORE LAN

The ParSCORE software is now installed on your PC. To access it, go to **Start → Programs → ParSCORE LAN 5.5 → ParSCORE LAN – Client**.