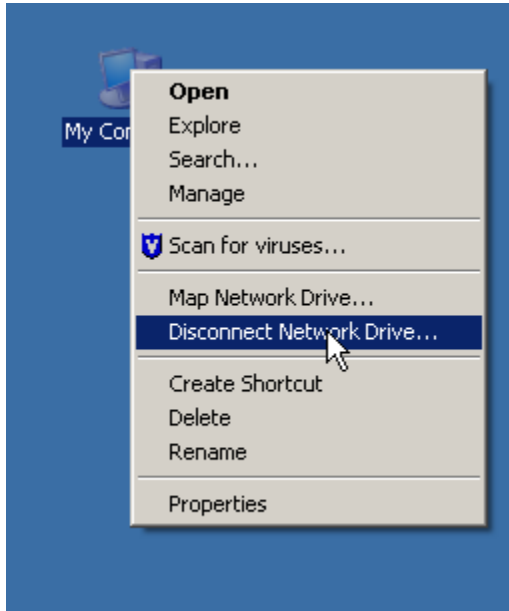


How to upgrade your campus computer from ParScore 5.5 to 6.5

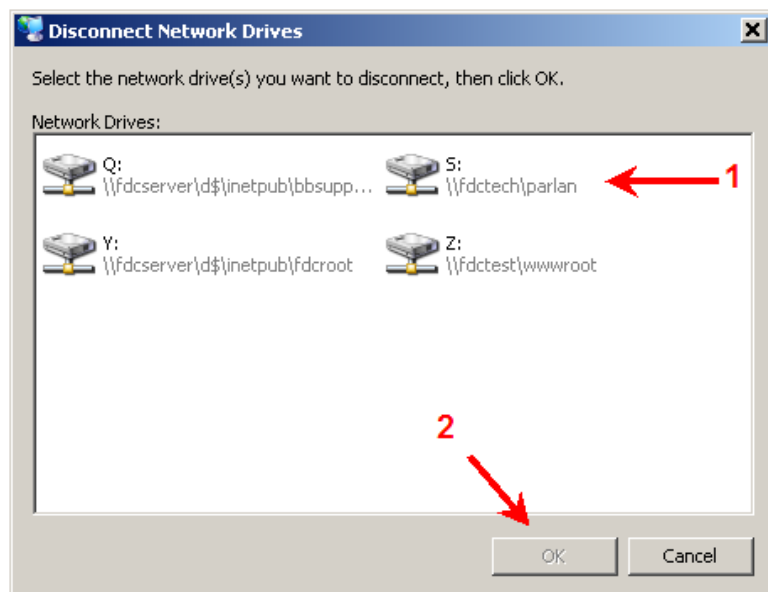
Step One: Disconnect the Network Drive

Right-click on *My Computer* and select **Disconnect Network Drive**.

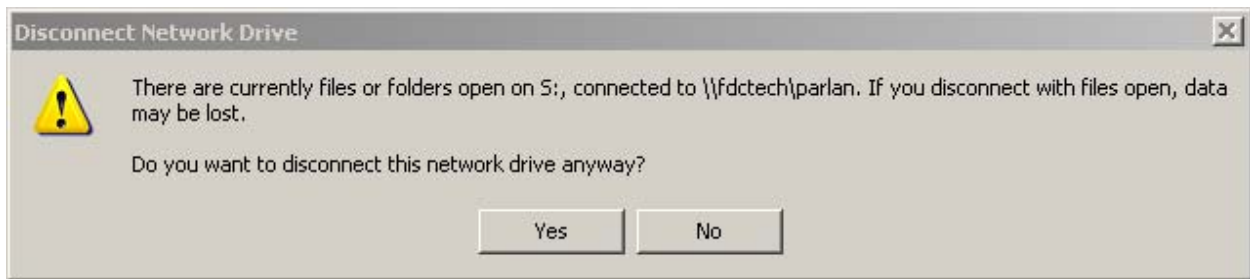
Note: This step is necessary as the new software version (6.5) is located on a **NEW** server.



The *Disconnect Network Drives* window will display. Select the drive connected to [\\fdctech\parlan](http://fdctech.parlan). Typically this will be the S: drive. Then click the **OK** button.

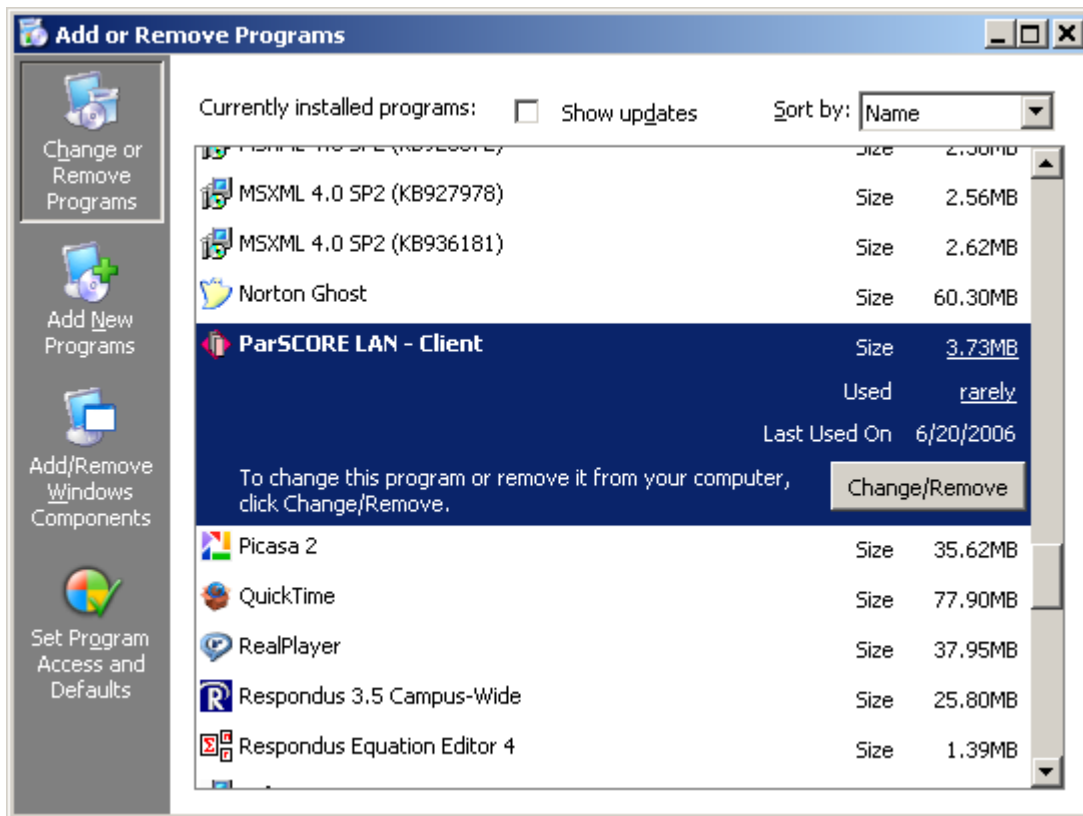


If the screen below displays. Select **Yes**.

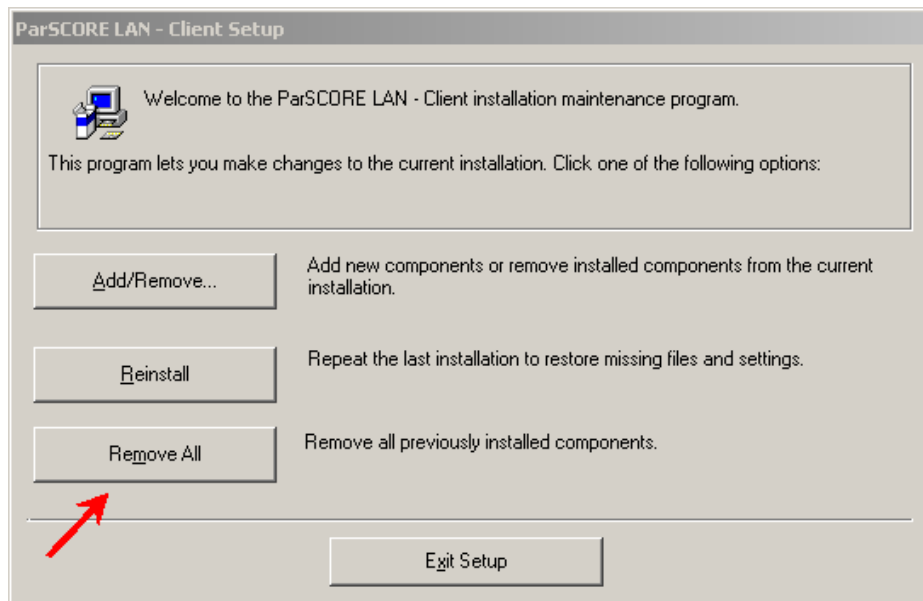


Step Two: Uninstall the parScore program

On your Windows taskbar: Click **Start > Settings > Control Panel**. On the Control Panel, double-click **Add or Remove Programs**. Wait while the computer populates the window. Locate ParSCORE LAN – Client and click the **Change/Remove** button.

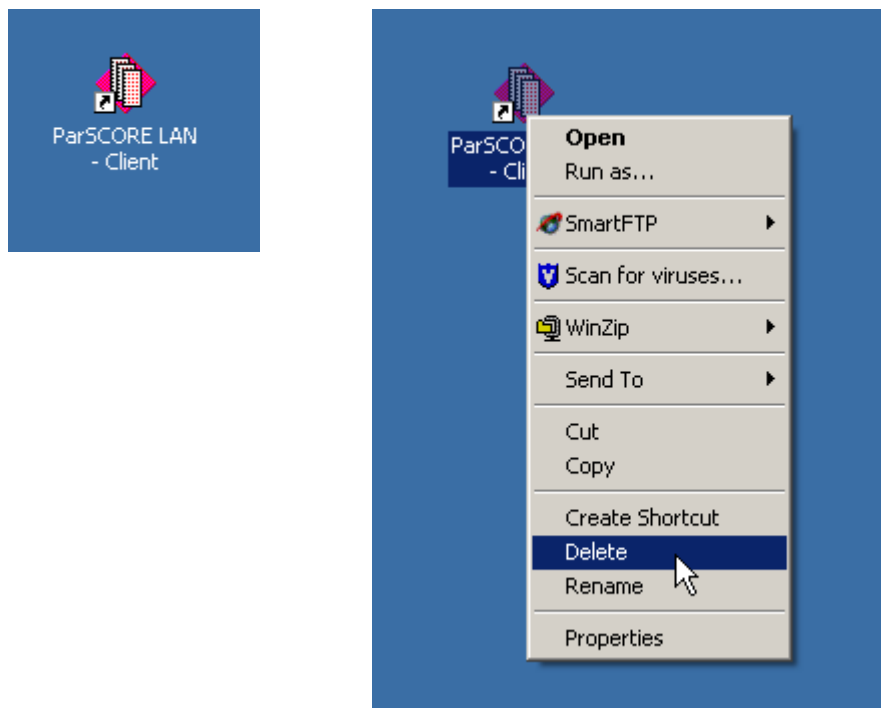


The *ParSCORE – LAN – Client* window will display. Click **Remove All**.



Step Three: Remove the current desktop shortcut to parScore

Right-click on the *ParScoreLAN -Client* icon on the desktop and select **Delete**.



Step Four: Map the network drive to the NEW FDC server and Install the new ParScore software version 6.5

For step-by-step INSTRUCTIONS please refer to the document: **How to Install Scantron's ParSCORE 6.5 Software on Your Campus Computer**