

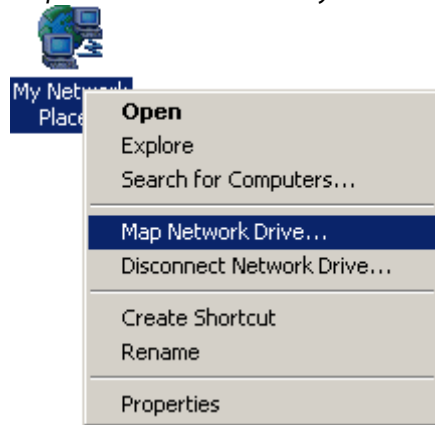
How to Install Scantron's ParSCORE Software on Your Campus Computer

Last updated: Wednesday, August 06, 2003

Step One: Map Network Drive

The first step is to trick your computer into thinking that the Scantron server is actually a hard drive on your computer. On any Windows-based PC connected to CSUF's AD network, right-click on the **My Network Places** icon and choose **Map Network Drive**. [Your computer must be connected to the AD network to be able to use Scantron ParSCORE.]

Figure 1
Map Network Drive under My Network Places

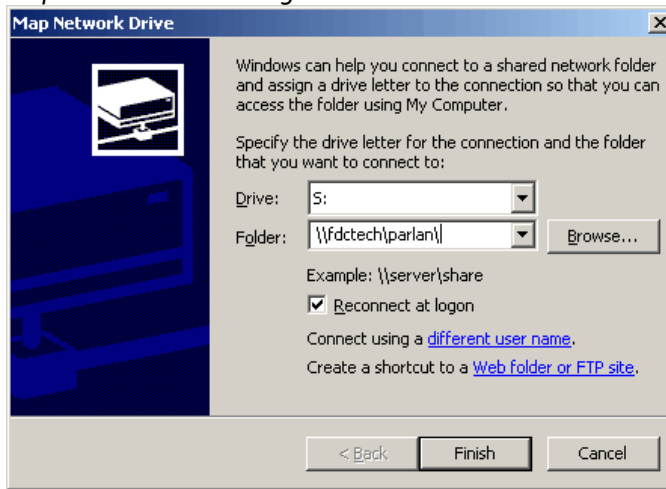


On the **Map Network Drive** screen, click on the **Drive:** pull down list and choose **S:**. [You MUST choose S: if you want to use the Scantron server in the FDC or if you want to access Scantron on any other campus computer.]

In the Folder: box, key in `\\fdctech\parlan\`

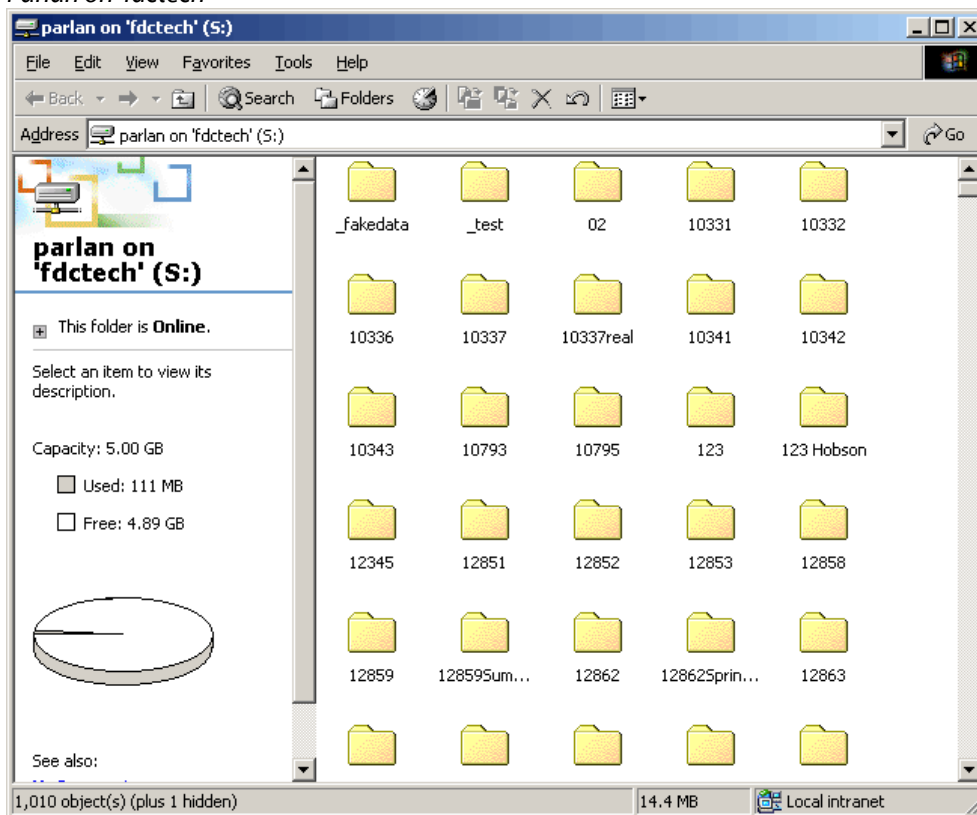
Check **Reconnect at logon** and then click on the **Finish** button.

Figure 2
Map Network Drive dialog box



Once you have clicked on the **Finish** button, the ParLAN window appears. Close this window.

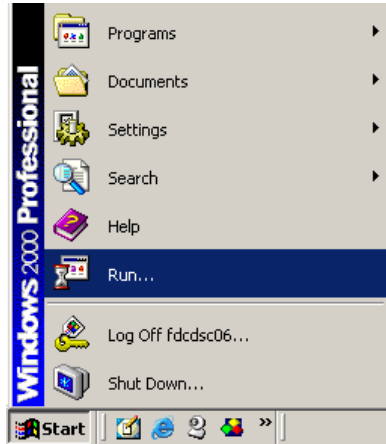
Figure 3
Parlan on 'fdctech'



Step Two: Install the ParSCORE for Windows LAN Software

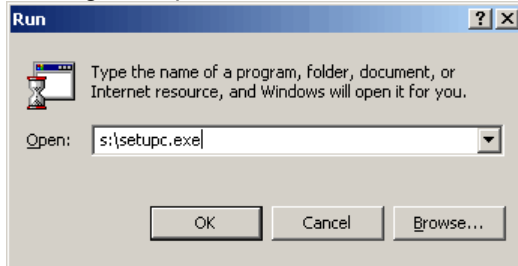
Go to **Start > Run**.

Figure 4
Start > Run



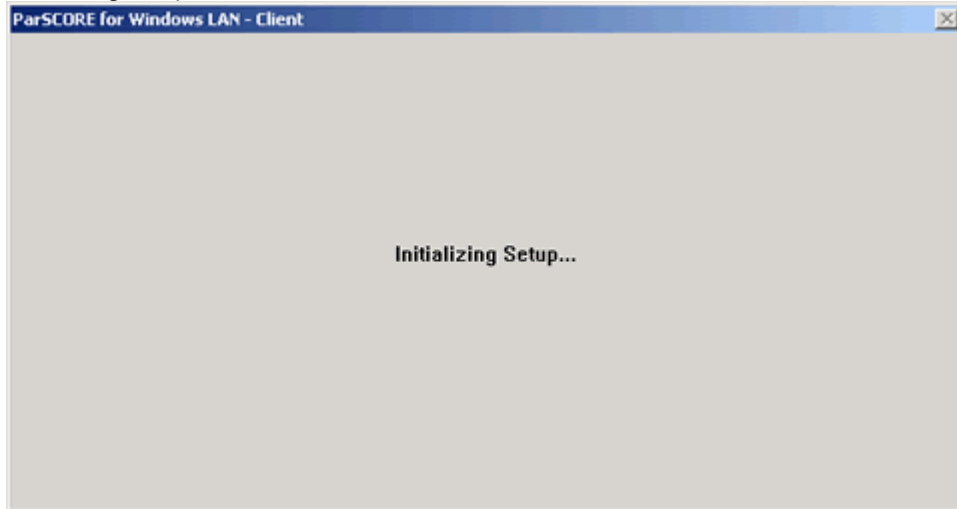
In the **Run** dialog box, key in **s:\setup.exe** and click on the **OK** button. [Note the letter **c** in **setup.c.exe**]

Figure 5
Running s:\setup.exe



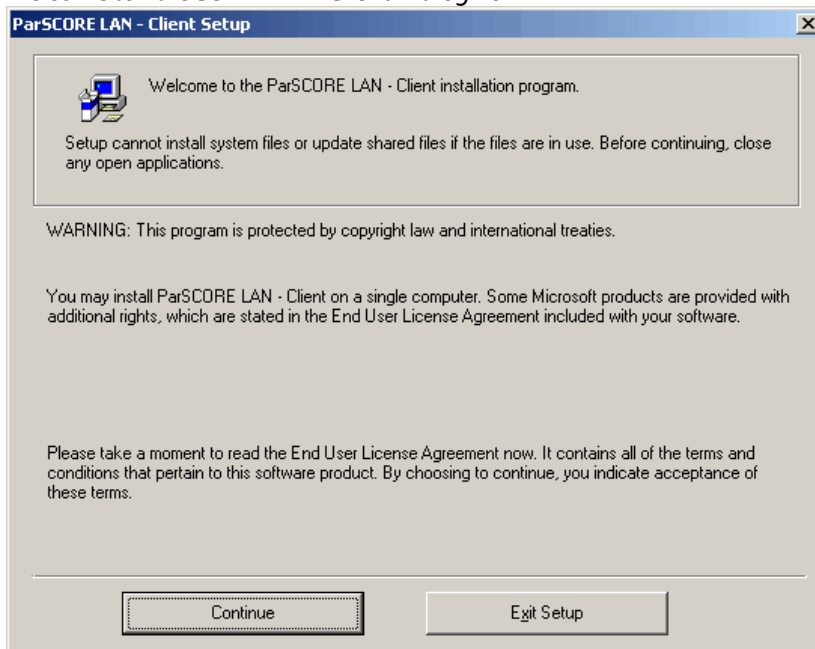
Once you run **setupc.exe**, an absurdly large **Initializing Setup** window appears for a few seconds.

Figure 6
Initializing Setup in ParSCORE for Windows LAN – Client



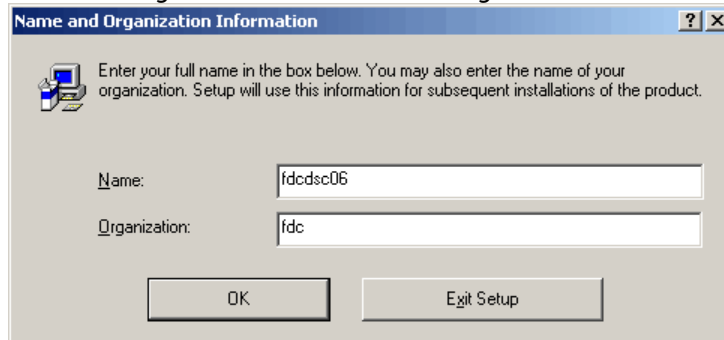
Shortly thereafter, a Welcome screen appears. Click on the **Continue** button.

Figure 7
Welcome to ParSCORE LAN – Client Dialog Box



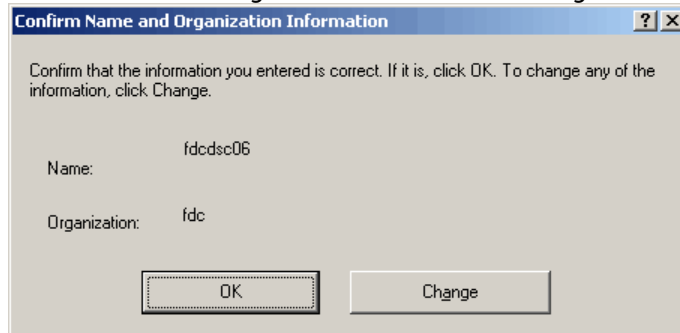
A box appears asking you for your name and organization information. Key in your name and department and then click on the **OK** button.

Figure 8
Name and Organization Information Dialog Box



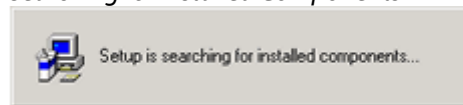
You'll be asked to confirm your name and organization. If the information is incorrect, click on the **Change** button. Otherwise, click on the **OK** button.

Figure 9
Confirm Name and Organization Information Dialog Box



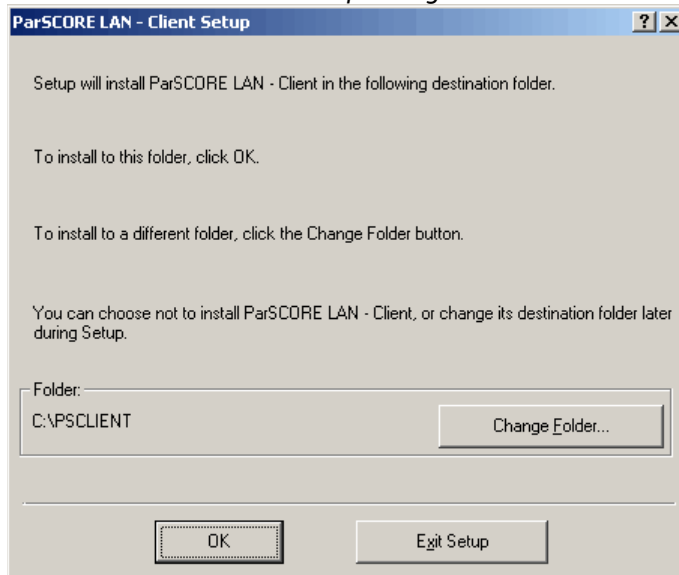
ParSCORE then searches your computer for previous installations of ParSCORE.

Figure 10
Searching for Installed Components



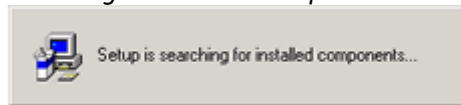
ParSCORE then gives you a choice of where on your computer you would like the software to be installed. Click on the **Change Folder...** button if you would like to change where the software is to be installed. Otherwise, click on the **OK** button.

Figure 11
ParSCORE LAN – Client 5.0 Setup Dialog Box



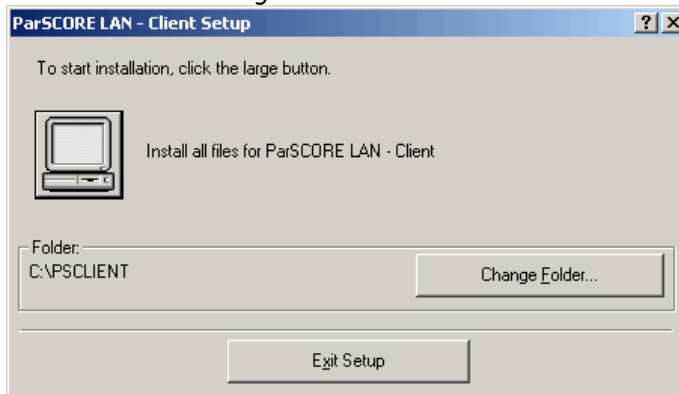
ParSCORE, once again, searches your system for previous installations of ParSCORE.

Figure 12
Searching for Installed Components



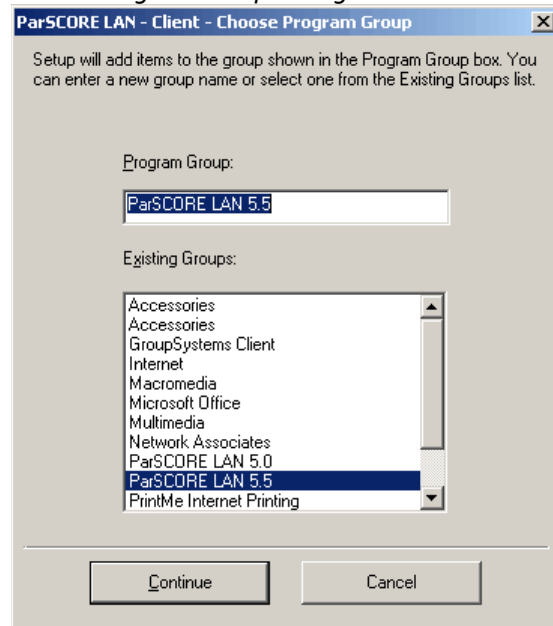
Eventually, the install window appears. Click on the large computer screen button (to the left of the words **Install all files for ParSCORE LAN – Client**)

Figure 13
Start Installation Dialog Box



The next screen asks you to choose where on your Start menu you would like the ParSCORE icons to be installed. Choose a different location if you wish, or simply click on the **Continue** button.

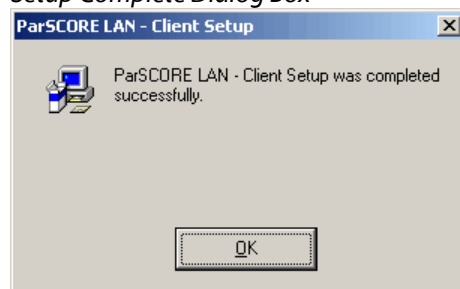
Figure 14
Choose Program Group Dialog Box



The install process should go quickly. ParSCORE will check to see if your computer has the necessary free disk space to install the software, it will install the software, and it will then update your system.

Finally, when the installation process is complete, the following screen appears. Click on the **OK** button.

Figure 15
Setup Complete Dialog Box



Step Four: Start ParSCORE LAN

The ParSCORE software is now installed on your PC. To access it, go to **Start → Programs → ParSCORE LAN 5.5 → ParSCORE LAN – Client**