

Scantron Forms Available for Sale in CSUF's Titan Shops

Last updated: Tuesday, December 17, 2002

Enrollment Sheets:

F-288-ERI-L

Front

Back

Side 1: Student Enrollment
Side 2: 200 questions
Red, 6" x 11"

F-1712-ERI-L

Front

Back

Side 1: Student enrollment
& 200 questions
Side 2: Mini blue book
Pink, 8.5" x 11"

F-3652-ERI-L

Front

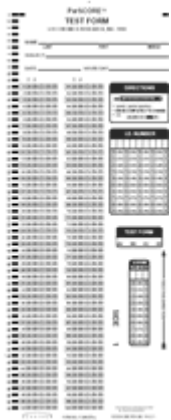
Back

Side 1: Student enrollment
Side 2: 200 questions & bar
code area
Orange, 8.5" x 11"

Test Forms:

F-289-ERI-L

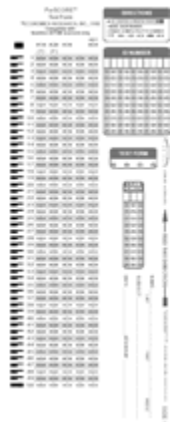
Front



Side 1: 100 questions (1 through 100)
Side 2: 100 questions (101 through 200)
Red, 4.25" x 11"

X-101864-ERI-L ("form 8000")

Front



Side 1: 50 questions (1 through 50)
Side 2: 50 questions (51 through 100)
Green, 4.25" x 11"

Images of all of these forms are available in GIF format at
<http://fdc.fullerton.edu/technology/scantron/>